

Gîte Le Hêtre

56910 Quelneuc - Morbihan - Bretagne
Michelle Orhand - Phone 06 10 03 09 43
contact@gites-boispeschard.com



Area: 131 m²

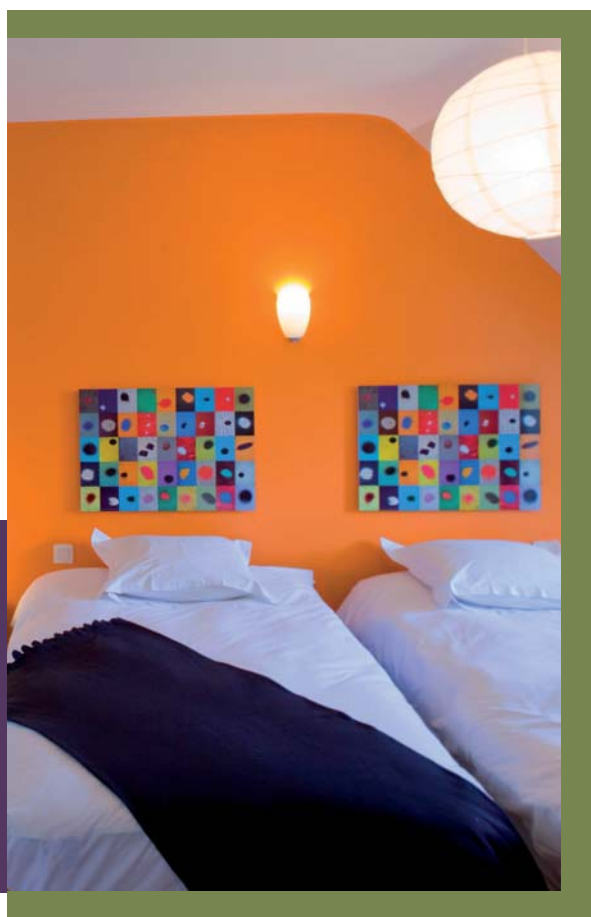
Accommodates: 8 guests

Number of rooms: 4

Pets welcome

Pool on the premises

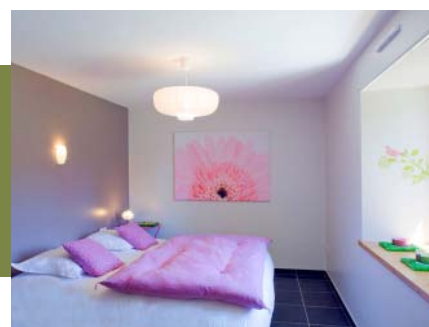
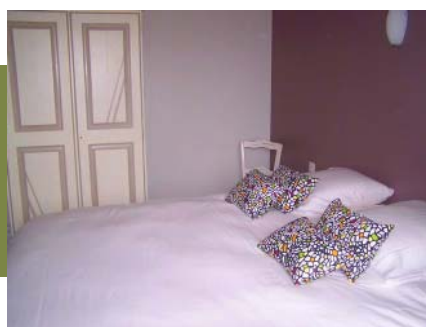
Internet



Cottage with open kitchen, dining room, living room with wood stove, 4 bedrooms (4 double beds 2x90x200 or 180x200, 1 child's cot 80x190, 1 baby bed), shower/lavatory, bathroom, separate lavatories. Independent furnished terrace, sheltered bicycle storage. Aérothermal heating. Shared facilities: indoor heated pool, sauna, 5,000-m² garden, pond, stables for horses, game room with billiard table and table football, free WiFi with access code. Sheets, bath and household linen supplied



Gîte Le Hêtre



Facilities & services:

Indoors: 4-burner induction cooker, pyrolysis oven, microwave oven, combined refrigerator-freezer, coffee maker and kettle, toaster, dishwasher, washing machine, dryer, flat-screen LCD TV, DVD player, vacuum cleaner, iron and ironing board.

Outdoors: barbecue, private terrace with garden furniture, lounge chairs, private parking.

Baby facilities: with advance request

Available amenities: 3 foldable baby beds with thick mattress + 3 wooden high chairs + 1 baby bath